



LOCKOUT/TAGOUT SYSTEMS

The **Lockout/Tagout (LOTO)** or “**lock and tag**” is a safety procedure used to ensure that dangerous machinery is properly shut off before servicing or repairs. Essentially, the Lockout/Tagout prevents any accidental turning on of switches and valves, which could lead to fatal accidents. The device is “isolated” once locked out by the lock and tag clamps. The clamps have to be tagged so as to warn the surrounding people not to de-“isolate” the device.

Lockout/Tagout clamps with multiple padlock insertions are ideal for projects involving two or more people. Each person installs his own padlock to “isolate” the device from accidental operation. The lockout/tagout ensures that the device can be de-“isolated” only when the whole project is complete.

- Safety Padlocks
- Lockout Hasps
- Electrical Lockout
- Valve Lockouts
- Group & Multi-Point Lockouts
- Pneumatic Lockouts
- Aviation Lockout Program
- Tags & Signs





MASTER LOCK® SAFETY PADLOCKS

ZENEX™ THERMOPLASTIC SAFETY PADLOCK

- Durable, lightweight (4oz), non-conductive thermoplastic lock body
- UV stable, withstands extreme temperatures (-57°C to 177°C)
- Compliance with OSHA "One Employee, One Lock, One Key" directive
- 38mm wide, 44mm tall body, shackle with 38mm clearance
- Padlock Options: Keyed Different, Keyed Alike and Master Keyed
- Key retaining - ensures padlock is not left unlocked



PRODUCT CODE	DESCRIPTION
940MLC410RED	Zenex™ Thermoplastic Padlock, Red
940MLC410YLW	Zenex™ Thermoplastic Padlock, Yellow

PRODUCT CODE	DESCRIPTION
940MLC410RED	Zenex™ Thermoplastic Padlock, Red
940MLC410YLW	Zenex™ Thermoplastic Padlock, Yellow

DIELECTRIC ZENEX™ THERMOPLASTIC SAFETY PADLOCK

- Plastic shackle helps prevent electrocution, arc flashing & electrical current from shackle to key
- All components are non-sparking and non-magnetic
- Durable, lightweight, non-conductive Thermoplastic lock body
- 38mm wide, 45mm tall body, plastic shackle with 38mm clearance
- Keyed different, 6-pin tumbler with over 40,000 available key changes cylinder



PRODUCT CODE	DESCRIPTION
940MLC406RED	Dielectric Zenex™ Thermoplastic Padlock, Red
940MLC406YLW	Dielectric Zenex™ Thermoplastic Padlock, Yellow

PRODUCT CODE	DESCRIPTION
940MLC406BLU	Dielectric Zenex™ Thermoplastic Padlock, Blue
940MLC406GRN	Dielectric Zenex™ Thermoplastic Padlock, Green

AMERICAN LOCK ANODIZED ALUMINUM SAFETY PADLOCK

- Anodized finish suitable for lockout tagout in food processing facilities
- Corrosion resistant finish for tough environments
- High visibility color plus high security
- Keyed different 5-pin tumbler rekeyable cylinder
- Available colour: Blue, Green, Red, Yellow

PRODUCT CODE	DESCRIPTION
940MLCA1106	American Lock 1-1/2" Wide Anodized Aluminum Body, Extra Length Shackle 1-1/2"
940MLCA1107	American Lock 1-1/2" Wide Anodized Aluminum Body, Extra Length Shackle 3"



38mm wide with 76mm tall

38mm wide with 38mm tall

MASTER LOCK® LOCKOUT HASPS

SAFETY LOCKOUT HASP

- Attach hasp to energy disconnect switch
- Keeps equipment inoperative while repairs are made
- Provides effective multi-person lockout
- Aluminium or steel body with vinyl-coated handle
- Holds up to 6 padlocks with shackles up to 6.35mm in diameter
- **416 & 417:** Spark resistant aluminum with red vinyl coated handle

PRODUCT CODE	DESCRIPTION
940MLC416	416 Aluminium Hasp, 25mm Jaw dia.
940MLC417	417 Aluminium Hasp, 38mm Jaw dia.
940MLC420	420 Steel Hasp, 25mm Jaw dia.
940MLC421	421 Steel Hasp, 38mm Jaw dia.



S430

S431

SAFETY LOCKOUT HASP FOR SMALL LOCKOUT HOLES

- 4mm diameter fits smaller lockout holes
- **S430:** Steel shackle, plastic body, holds up to 2 safety padlocks
- **S431:** Constructed of stainless steel (316 grade), holds up to 8 safety padlocks

PRODUCT CODE	DESCRIPTION
940MLCS430	S430 Steel Hasp with Red Plastic Handle, 25mm Jaw dia.
940MLCS431	S431 Stainless Steel Hasp, 25mm Jaw dia.



4184

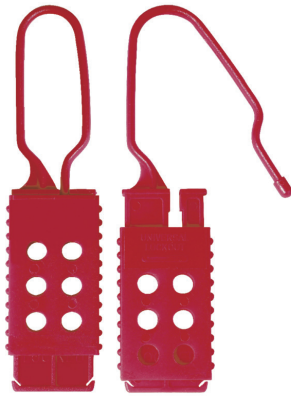
419

STEEL HEAVY DUTY LOCKOUT HASP

- Heavy duty pry proof steel lockout hasp
- Lockout by multiple workers at each lockout point
- Keeps equipment inoperative while repairs or adjustments are being made
- Control cannot be turned on until last worker's safety padlock is removed from hasp
- **418:** holds up to 4 padlocks, 25mm jaw dia.
- **419:** holds up to 8 padlocks, 79mm (h) x 25mm (w) jaw dia.

PRODUCT CODE	DESCRIPTION
940MLC418	418 Heavy Duty Steel Hasp, 25mm jaw dia.
940MLC419	419 Heavy Duty Steel Hasp, 79mm x 25mm jaw dia.

MASTER LOCK® LOCKOUT HASPS



NYLON LOCKOUT HASP

- Plastic lockout hasp
- Lockout by multiple workers at each lockout point
- Keeps equipment inoperative while repairs or adjustments are being made
- Spark proof nylon construction
- Holds up to 6 padlocks

PRODUCT CODE	DESCRIPTION
940MLC428	428 Nylon Non-Conductive Lockout Hasp, 25mm Jaw dia

S440



S450

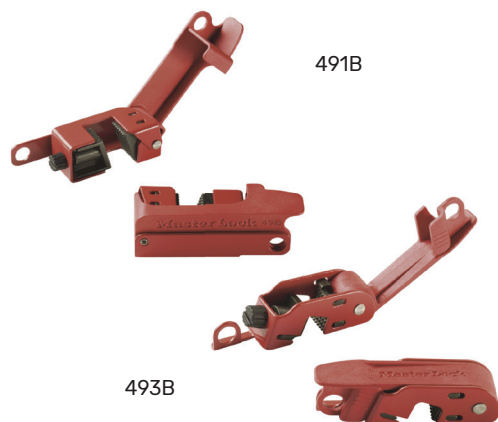


ANODIZED ALUMINIUM HASPS

- Eliminates the need to daisy chain hasps together in group lockout scenarios
- Keeps equipment inoperative while repairs or adjustments are made
- Control cannot be turned on until last worker's padlock is removed from hasp
- Anodized aluminum finish for non-sparking and superior corrosion resistance
- Offset lockout holes ensures that hasp cannot be locked in open position
- **S440:** holds up to 12 padlocks
- **S450:** holds up to 24 padlocks

PRODUCT CODE	DESCRIPTION
940MLCS440	S440 12-hole Anodized Aluminium Hasp, 25mm Jaw Dia
940MLCS450	S450 24-hole Anodized Aluminium Hasp, 25mm Jaw Dia

MASTER LOCK® ELECTRICAL LOCKOUT



GRIP TIGHT™ CIRCUIT BREAKER LOCKOUT

- Innovative patented Grip Tight™ design effectively locks out circuit breakers
- Great hold strength with universal fit
- Secure and simple mounting for a solid lockout
- Holds tight with simple thumb turn and clamping handle
- Compact lockout device is easy to carry and store
- Durable construction with powder coated steel and reinforced polymer for operation in harsh environments
- **491B:** Fits wide or tall breaker toggles
- **493B:** Standard single and double toggles, typically found on 120 and 240 volt breakers

PRODUCT CODE	DESCRIPTION
940MLC491B	491B Grip Tight™ Circuit Breaker
940MLC493B	493B Grip Tight™ Circuit Breaker

S2391



S2390

MINIATURE CIRCUIT BREAKER LOCKOUT, PIN-OUT TOGGLES

- Locks out most miniature ISO/DIN circuit breakers throughout the world
- Works with all Master Lock safety padlocks and lockout hasps
- Patented
- **S2390:** Black tab, pin-out toggles, 11mm or less
- **S2391:** Red tab, pin-out toggles, 11mm-13mm

PRODUCT CODE	DESCRIPTION
940MLCS2390	S2390 Miniature Circuit Breaker, Black Tab
940MLCS2391	S2391 Miniature Circuit Breaker, Red Tab

MINIATURE CIRCUIT BREAKER LOCK-OUT, PIN-IN TOGGLES

- Pins inward
- Locks out many miniature ISO/DIN circuit breakers throughout the world
- Fits breakers with lockout holes on the outside of the switch
- Fits openings up to 13mm between lockout holes
- Works with all Master Lock safety padlocks and lockout hasps
- Patented



S2392

PRODUCT CODE	DESCRIPTION
940MLCS2392	S2392 Miniature Circuit Breaker

MASTER LOCK® ELECTRICAL LOCKOUT



S2393

MINIATURE CIRCUIT BREAKER LOCKOUT, UNIVERSAL FIT

- Universal miniature circuit breaker lockout
- Locks out virtually all miniature ISO/DIN circuit breakers throughout the world
- Fits on breaker toggles and can be tightened using screwdriver
- Works with all Master Lock safety padlocks and lockout hasps

PRODUCT CODE	DESCRIPTION
940MLCS2393	S2393 Miniature Circuit Breaker, Universal



S2394

MINIATURE CIRCUIT BREAKER, UNIVERSAL FIT, TOOL-FREE

- Locks virtually all miniature ISO/DIN circuit breakers throughout the world
- Thumb turn dial screw for easy attachment - no tools required!
- Dial is inaccessible in the locked position to prevent removal
- Safety padlock can be applied horizontally or vertically
- Can be mounted side-by-side on adjacent miniature circuit breakers
- Durable thermoplastic material is chemical resistant and performs effectively in extreme environments
- Works with all Master Lock safety padlocks and lockout hasps

PRODUCT CODE	DESCRIPTION
940MLCS2394	S2394 Miniature Circuit Breaker, Universal, Tool-free



CIRCUIT BREAKER COMPACT PADLOCK

- Keyed different
- 4.7mm diameter cable shackle allows safety padlock to properly lock all types of circuit breaker lockout devices
- Flexible cable allows the compact lock body to be positioned so most panel doors can be closed
- Fits the tight space constraints within circuit breaker shutoff boxes
- 28mm x 19mm steel body, 127mm flexible steel cable (5mm dia.)

PRODUCT CODE	DESCRIPTION
940MLC7C5RED	7C5RED Circuit Breaker Compact Padlock, Keyed Different

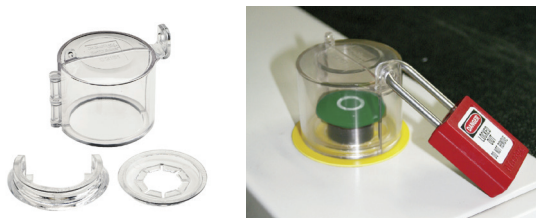


ROTATING ELECTRICAL PLUG LOCKOUT

- Patented outward/inward rotating design allows for easier installation in confined space applications application and storage
- Surrounds the electrical plug and protects against accidental reconnection
- Patented rotating design allows for easier
- Tough, lightweight, dielectric thermoplastic bodies withstand chemicals
- Complete with high visibility safety labels

PRODUCT CODE	DESCRIPTION
940MLC487	487 Rotating Electrical Plug Lockout, cord dia. up to 19mm, plug dia. up to 83mm
940MLC488	488 Rotating Electrical Plug Lockout, cord dia. up to 19mm, plug dia. up to 152mm

MASTER LOCK® ELECTRICAL COVERS



REMOVEABLE PUSH BUTTON & ROTARY SWITCH COVER

- Removable Push Button and Rotary Switch Cover
- Prohibits access to a switch or control
- Fits both 30.5mm and 22.5mm diameter switches
- Clear bases and cover allow visibility of nameplates and labels
- Horse-shoe shaped retrofit base allows use with raised nameplates and off-center installation to accommodate rotary switch knobs
- Accommodates buttons up to 51mm dia. and 44mm tall
- Includes one cover, one new install base and one retrofit base with double-faced adhesive tape

PRODUCT CODE	DESCRIPTION
940MLCS2151	S2151 Removeable Push Button and Rotary Switch Cover



INSTALL BASES FOR S2151

S2152AST

- Install bases for S2151, pack of 12 new install bases, allows one S2151 removable cover to service multiple switches on same panel

S2154AST

- Retrofit install bases for S2151, pack of 12 new horse-shoe shaped bases with 2-faced adhesive tape, allows for use with raised nameplates and off-center installation to accommodate rotary switch knobs

PRODUCT CODE	DESCRIPTION
940MLCS2152AST	S2152AST Install Bases for S2151
940MLCS2154AST	S2154AST Retrofit Install Bases for S2151



MINIATURE CIRCUIT BREAKER, UNIVERSAL FIT, TOOL-FREE

- Prohibits access to a switch or control
- Captured by the rotary or push button switch bezel
- Fits both 30.5mm and 22.5mm diameter switches
- Clear base and cover allow visibility of nameplates and labels
- Accommodates buttons up to 40mm dia. and 44mm tall

PRODUCT CODE	DESCRIPTION
940MLCS2153	S2153 Installed Push Button and Rotary Switch Cover



UNIVERSAL WALL SWITCH COVER

- Locks out both toggle and Decora™ paddle wall switches
- Patented design assures switch stays locked on or off
- Hinges open for unobstructed normal operations of switch

PRODUCT CODE	DESCRIPTION
940MLC496B	496B Universal Wall Switch Cover

MASTER LOCK® ELECTRICAL COVERS



OVERSIZED PLUG & HOIST CONTROL COVER

- Effectively locks out odd size and large electrical connectors and hoist controls
- Cinch sack offers broad application solutions
- Insert PVC tubing to block access to hoist control buttons
- Flexible and durable rip-stop nylon bag fits easily in safety tool boxes
- Accepts up to 6 safety padlocks or lockout hasps
- 453L: 178mm dia. x 432mm (h)
- 453XL: 254mm dia. x 660mm (h)

PRODUCT CODE	DESCRIPTION
940MLC453L	453L Oversized Plug & Hoist Control Cover
940MLC453XL	453XL Oversized Plug & Hoist Control Cover



MASTER LOCK® VALVE LOCKOUTS



REMOVEABLE PUSH BUTTON & ROTARY SWITCH COVER

- Easy to use, adjustable design fits virtually all butterfly valves
- Locks out valve in seconds by feeding S806 cable lockout device through desired eyelet and around valve neck
- Durable, lightweight thermoplastic material is chemical resistant and performs effectively in extreme environments
- Directional application arrows allow for ease of installation and minimize user error
- Stainless steel rivet allows device to smoothly pivot open and closed to ensure proper fit

PRODUCT CODE	DESCRIPTION
940MLCS3920	S3920 Butterfly Valve Lockout Device
940MLCS3921	S3921 Butterfly Valve Lockout Kit



SEAL TIGHT™ HANDLE-ON BALL VALVE LOCKOUT

- Clamps tight on handle stop to prevent handle movement
- Works on insulated pipes and in close quarters
- Durable aluminum and steel construction defies corrosive environments and extreme temperatures up to 538°C
- Lightweight and compact for easy carrying and storage

PRODUCT CODE	DESCRIPTION
940MLCS3068	S3068 Seal Tight™ Handle-On Ball Valve Lockout



ROTATING GATE VALVE LOCKOUTS

- Zenex™ composite body withstand chemicals and extreme temperatures ranging from -57°C to 177°C
- Unique patented outward/inward rotating design allows for easier installation and storage
- Surrounds the valve operating handle to protect against accidental valve opening
- Center knockout can be removed for rising stem gate valves
- Multiple workers can apply their personal safety padlocks

PRODUCT CODE	DESCRIPTION
940MLC480	480 Gate Valve Lockout, fits 25-76mm
940MLC481	481 Gate Valve Lockout, fits 50-127mm
940MLC482	482 Gate Valve Lockout, fits 101-165mm
940MLC483	483 Gate Valve Lockout, fits 152-254mm
940MLC484	484 Gate Valve Lockout, fits 203-330mm
940MLC485	485 Set of Gate Valve Lockouts (MLC480-484)

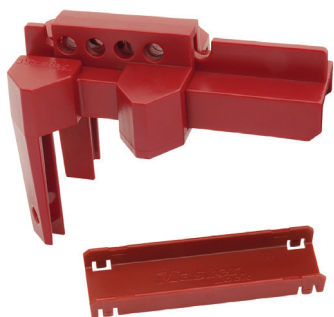


SEAL TIGHT™ HANDLE-OFF BALL VALVE LOCKOUT

- Patented innovative design eliminates the risk of valve reactivation with removal of the handle
- Covers valve stem for secure lockout tagout
- Fits virtually all types of pipe including insulated, PVC and metal
- Lightweight, flexible lockout device is easily carried to the job and then folded for compact storage in safety toolboxes
- Constructed of durable PVC polyester fabric and
- HDPE plastic

PRODUCT CODE	DESCRIPTION
940MLC468L	468L Seal Tight™ Handle-Off Ball Valve Lockout

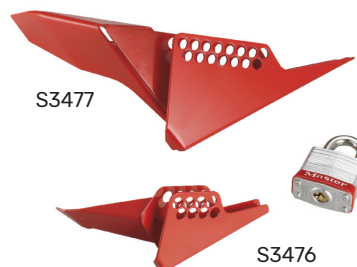
MASTER LOCK® VALVE LOCKOUTS



ADJUSTABLE BALL VALVE LOCKOUT

- Easy to use lockout device prevents accidental activation of a closed ball valve
- Durable, lightweight thermoplastic material is chemical resistant and performs effectively in extreme environments
- Removable insert accommodates a wide range of handle designs and dimensions
- Works with S806 cable lockout device for the most secure fit

PRODUCT CODE	DESCRIPTION
940MLCS3081	S3081 Adjustable Ball Valve Lockout

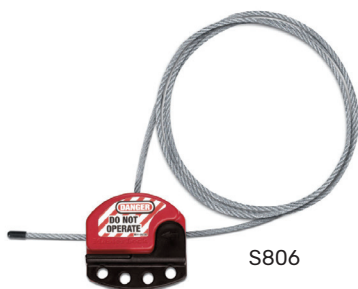


WEDGE STYLE BALL VALVE LOCKOUTS

- 1/4 turn ball valve lockout
- Fits manual, quarter turn ball valve handles to protect against accidental opening
- Easy to use one piece design locks valve in OFF position
- Compact size can easily be stored or carried
- Two rows of lock out points allow for a secure fit
- Heat resistant powder coated metal body
- S3476: fits valves between 6mm to 25mm dia.
- S3477: fits valves between 32mm to 76mm dia.

PRODUCT CODE	DESCRIPTION
940MLCS3476	S3476 Wedge Style Ball Valve Lockout, 6mm-25mm dia.
940MLCS3477	S3477 Wedge Style Ball Valve Lockout, 32mm- 76mm dia.

MASTER LOCK® GROUP LOCKOUT KITS



S806

ADJUSTABLE CABLE LOCKOUT

- Integrated safety lockout hasp and cable is ideal for multiple circuit breaker panels and side-by-side gate valve lockouts
- Tough, flexible multi-stranded steel cable is insulated with a clear plastic coating (PVC free)
- Feed the cable end through the points to be locked out, then back through the lockout body
- Cinch it tight to remove any slack with the patented locking feature
- Performs effectively in extreme conditions
- Tough, lightweight thermoplastic body withstands chemicals

PRODUCT CODE	DESCRIPTION
940MLCS806	Adjustable Cable Lockout, 1.8m
940MLCS806CBL3	Adjustable Cable Lockout, 91.4cm
940MLCS806CBL15	Adjustable Cable Lockout, 4.6m



S1017

S1020

PERSONAL LOCKOUT BOX, UNFILLED

- Safety lockout toolbox keeps important lockout devices and padlocks together
- Ultra-durable design
- Lockable to keep items secure
- S1017: 432mm wide
- S1020: 508mm wide

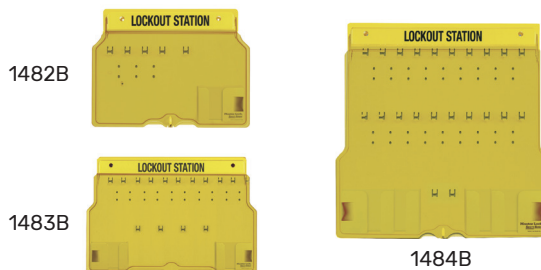
PRODUCT CODE	DESCRIPTION
940MLCS1017	S1017 Personal Lockout Box, 432mm
940MLCS1020	S1020 Personal Lockout Box, 508mm



LATCH TIGHT™ GROUP LOCK BOX

- Secure each lockout point on a piece of equipment with just one designated safety padlock
- Capture the keys from those lockout points by placing them in the lock box
- Each authorized employee locks one personal safety padlock onto the box, removing them only when their work is complete
- Exclusive Latch Tight™ feature ensures that keys cannot be accessed until the last safety padlock is removed
- Durable powder-coated red finish with an easy-to-grip, ergonomic handle
- Accepts 12 padlocks or lockout hasps

PRODUCT CODE	DESCRIPTION
940MLC498A	498A Latch Tight™ Group Lock Box



1482B

1483B

1484B

PADLOCK STATION, UNFILLED

- Integrated, one-piece molded construction eliminates loose parts
- Resilient polycarbonate material provides twice the heat resistance and quadruple the impact strength of typical stations
- Reinforced snap-on clips provide easy padlock and hasp storage and removal
- Translucent lockable cover protects contents from dust

PRODUCT CODE	DESCRIPTION
940MLC1482B	1482B Padlock Station, for 4 locks
940MLC1483B	1483B Padlock Station, for 10 locks
940MLC1484B	1484B Padlock Station, for 20 locks

MASTER LOCK® MECHANICAL LOCKOUT



STAINLESS STEEL PNEUMATIC LOCKOUT

- Prevents pneumatic fitting from being connected to pressurized air source
- Fits virtually all male pneumatic fittings found in manufacturing facilities
- Stainless steel construction for corrosion resistance
- Measures 33mm wide x 185mm tall x 3.2mm thick

PRODUCT CODE	DESCRIPTION
940MLCS3900	S3900 Stainless Steel Pneumatic Lockout

MASTER LOCK® TAGS & SIGNS



497A



S4801

DO NOT OPERATE SAFETY TAG

- 11mm dia. brass grommet accepts all safety padlocks
- Complies with OSHA lockout tagout standard
- Durable polyester laminate resists water, grease and extreme temperatures
- Heavy duty construction withstands over 23kgs of pullout force (OSHA requirement)
- 146mm high x 79mm wide heavy duty English safety tags
- S4801: Durable Polypropylene with PVC laminate overlay resists water, grease, extreme temperatures, and common industrial chemicals

PRODUCT CODE	DESCRIPTION
940MLC497A	497A Safety Tag, 12 pcs/bag
940MLCS4801	S4801 Self Laminating Safety Tag, 12 pcs/bag

